

Fire Ribbon Direct Vent 4 ft with mandatory safety screen

Model No.

48

Viewing Area

48.75" W x 13.75" H

Exterior Dimension

57.25" W x 28" H x 22.25" D

Framing Dimension

60" W x 34.5" H x 23.75" D

Gas Type*

Natural or LP/Propane

Gas Connection

1/2" pipe

On/Off

Programmable / thermostatic remote control standard

Efficiency

Up to 80%

Venting Options

Through exterior wall or vertical through roof,
Must vent 1' vertically before horizontal venting.

Vent Type

DuraVent DirectVent Pro 58DVA

Must source locally, not included.

Thermostat activated 160 c.f.m.

Fan

110 V

Electric

BTU input Natural gas

27,000 - 39,000 BTU/h

BTU input LP/propane

27,000 - 38,000 BTU/h

Doors/glass

Fixed ceramic glass panel

Interior Color

Satin Black

Sustained operating gas pressure parameters:

Natural gas 4.5" - 10.5" w.c.

LP/propane 11.0" - 13.0" w.c.

Certifications

Omni-Test Laboratories ANSI 221.99-2009

CSA 2.33-2010

Options

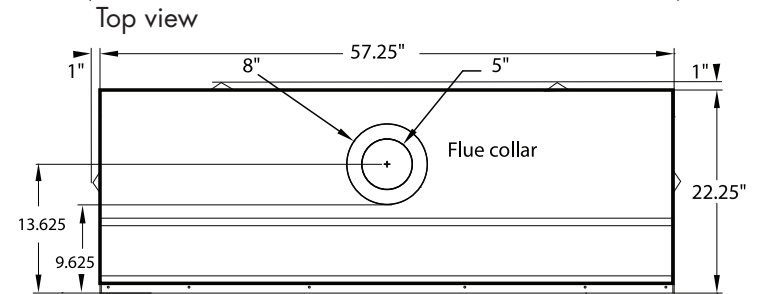
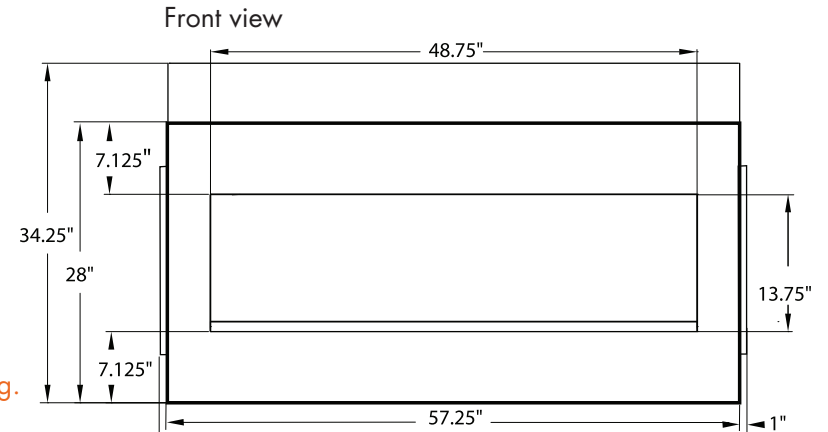
*Must be specified at time of ordering.

Fire Objects and Media Tray*

*required when using fire objects

Note:

This is a high throughput gas appliance and critical attention is needed to size the gas pipes properly.



Right side view

